

Accepted Manuscript

Optimization of the Extraction Process of Polyphenols from *Thymus serpyllum* L. herb using maceration, heat- and ultrasound-assisted techniques

Aleksandra A. Jovanović, Verica B. Đorđević, Gordana M. Zdunić, Dejan S. Pljevljakušić, Katarina P. Šavikin, Dejan M. Gođevac, Branko M. Bugarski

PII: S1383-5866(16)31842-1

DOI: <http://dx.doi.org/10.1016/j.seppur.2017.01.055>

Reference: SEPPUR 13518

To appear in: *Separation and Purification Technology*

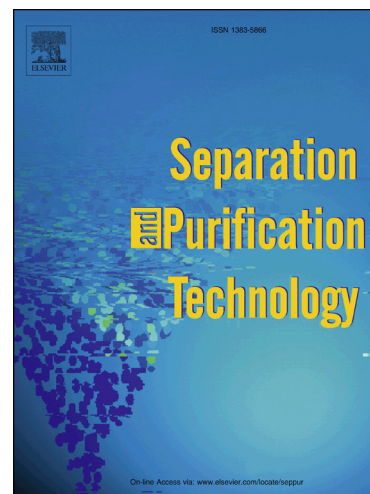
Received Date: 25 September 2016

Revised Date: 18 January 2017

Accepted Date: 22 January 2017

Please cite this article as: A.A. Jovanović, V.B. Đorđević, G.M. Zdunić, D.S. Pljevljakušić, K.P. Šavikin, D.M. Gođevac, B.M. Bugarski, Optimization of the Extraction Process of Polyphenols from *Thymus serpyllum* L. herb using maceration, heat- and ultrasound-assisted techniques, *Separation and Purification Technology* (2017), doi: <http://dx.doi.org/10.1016/j.seppur.2017.01.055>

This is a PDF file of an unedited manuscript that has been accepted for publication. As a service to our customers we are providing this early version of the manuscript. The manuscript will undergo copyediting, typesetting, and review of the resulting proof before it is published in its final form. Please note that during the production process errors may be discovered which could affect the content, and all legal disclaimers that apply to the journal pertain.



Optimization of the Extraction Process of Polyphenols from *Thymus serpyllum* L. herb using maceration, heat- and ultrasound-assisted techniques

Aleksandra A. Jovanović^a, Verica B. Đorđević^a, Gordana M. Zdunić^{b,*}, Dejan S. Pljevljakušić^b, Katarina P. Šavikin^b, Dejan M. Gođevac^c, Branko M. Bugarski^a

^a*Faculty of Technology and Metallurgy, University of Belgrade, Karnegijeva 4, 11000 Belgrade, Serbia, acancarevic@tmf.bg.ac.rs, ymanojlovic@tmf.bg.ac.rs, branko@tmf.bg.ac.rs*

^b*Institute for Medicinal Plant Research “Dr Josif Pančić”, Tadeuša Koščuška 1, 11000 Belgrade, Serbia, gzdunic@mocbilja.rs, dpljevljakusic@mocbilja.rs, ksavikin@mocbilja.rs*

^c*Institute for Chemistry, Technology and Metallurgy, Njegoševa 12, 11000 Belgrade, Serbia, dgodjev@chem.bg.ac.rs*

*Correspondence to:

Aleksandra Jovanović, Faculty of Technology and Metallurgy, University of Belgrade, Karnegijeva 4, 11000 Belgrade, Serbia, e-mail: acancarevic@tmf.bg.ac.rs

Abstract

Despite the fact that *Thymus serpyllum* is well-known medicinal plant and its chemical profile and biological activity have been investigated, there is no detailed study regarding the influence of different techniques and conditions on the extraction of polyphenolic compounds from *Serpylli herba*. The aim of this study was optimization of the extraction parameters that improves the efficiency of polyphenols extraction from *T. serpyllum*: particle size, solid-to-solvent ratio, solvent type and extraction time, by using maceration, heat- and ultrasound-assisted extraction (HAE and UAE). The extraction efficiency was expressed via total polyphenol content (TPC) and total flavonoid content (TFC). The statistical analysis (one-way ANOVA and full factorial design) has revealed that the optimal conditions for achieving the best polyphenols yield were particle size of 0.3 mm, 1:30 solid-to-solvent ratio and 50% ethanol, as environmentally friendly extraction medium, while extraction time has not shown statistically significant influence on polyphenols concentration, in all procedures. Under these conditions, the measured TPC was 26.6 mg GAE/L in maceration, 29.8 mg GAE/L in HAE and 32.7 mg GAE/L in UAE, which was in agreement with the predicted values, while TFC was 14.3 mg CE/L, 12.4 mg CE/L and 16.7 mg CE/L for maceration, HAE and UAE, respectively. According to total polyphenols yield, the efficiency of the extraction methods for all variables was ranked by significance in the following order: UAE > HAE > maceration, whereas total flavonoids yield was the highest in UAE, although there was no statistically significant difference between maceration and HAE. According to our results, UAE could be selected as the most successful and suitable technique for extraction of bioactive polyphenolic compounds from *Serpylli herba*. Using LC/MS and HPLC analysis, 9

polyphenolic compounds were identified and quantified: 6,8-Di-*C*-glucosylapigenin, chlorogenic acid, 6-hydroxyluteolin 7-*O*-glucoside, caffeic acid, luteolin 7-*O*-glucuronide, apigenin glucuronide, salvianolic acid K isomer, rosmarinic acid and salvianolic acid I. This study was an initial step in production of polyphenols-rich wild thyme extracts aimed to be used for formulation of foodstuffs and medicines.

Keywords: Experimental design, Extraction, Optimization, *Thymus serpyllum*, Total polyphenols.

Abbreviations

ANOVA	Analysis of variance
CA	Caffeic acid derivates
ChA	Chlorogenic acid
CE	Catechin equivalent
FC	Folin-Ciocalteu reagent
FL	Flavonoids
GAE	Gallic acid equivalent
HAE	Heat-assisted extraction
HPLC	High performance liquid chromatography
LC/MS	Liquid chromatography/mass spectrometry
RA	Rosmarinic acid
SA	Salvianolic acid

TFC	Total flavonoid content
TOF	Time-of-flight
TPC	Total polyphenolic content
UAE	Ultrasound-assisted extraction

ACCEPTED MANUSCRIPT

1. Introduction

Thymus serpyllum L. (Lamiaceae), well-known as wild thyme, grows in almost all the countries bordering the Mediterranean, in Asia and in parts of Central Europe. It is a perennial subshrub, which bilabiate tube-like calyx and tubular corolla are covered by dense gleaming glands that radiate essential oil. It belongs to the group of aromatic plants, which have high level of essential oils and polyphenolic compounds [1].

Wild thyme possesses antiseptic, anthelmintic, diaphoretic, antispasmodic, antioxidative, expectorant, carminative and diuretic properties [2,3,4]. It is also applied as an alexiteric, emmenagogue, analgesic and sedative agent [1]. *Serpylli herba* has been traditionally used in treatment of respiratory, digestive and genitourinary diseases [5]. It has been shown that strong decoction is good for reducing the whooping cough spasms and thinning the phlegm of bronchitis, as well as in preventing of hair loss [6,7]. According to Mihailović-Stanojević et al. [8], aqueous extract from *T. serpyllum* has shown NO-scavenging ability and antihypertensive effect. Previous reports have indicated protective effect of the aqueous tea infusions of wild thyme on the copper-induced oxidation of low-density lipoproteins [9]. Moreover, these extracts have antiinflammatory effect on colitis, because of its immunomodulatory properties [10]. Berdowska et al. [11] reported that extracts of wild thyme have showed high cytotoxicity against human breast cancer cell lines.

Polyphenols are large group of plants secondary metabolites often employed as food preservatives, antioxidants and additives, especially in meat and fish [12]. Flavonoids, as important group of polyphenols and natural antioxidants, may reduce oxidative stress in cardiovascular and neurodegenerative diseases, diabetes mellitus, asthma and eye disorders

[13,14,15]. There is a growing interest in extracting these metabolites from plant sources, in order to obtain a safe, natural and low-cost alternative to synthetic antioxidant components, out of which some possess toxic and mutagenic effects [16]. The chemical composition and biological activities of the *Thymus* extracts are the subjects of interest in medicine, pharmaceutical and food industries [2]. Furthermore, in recent studies different methods for the extraction of polyphenols were established [17,18,19,20]. These procedures vary in nature of plant material, solvent type, solid-to-solvent ratio, time, temperature, pressure and pH. Considering that polyphenolic compounds are various in structure, it is not simple to establish a standardized extraction method that would extract majority of polyphenols from each plant source [21]. Typical processes for obtaining plant extracts include maceration, percolation and Soxhlet extraction. These methods involve several disadvantages: low yield, long extraction time, large amount of plant material, high solvent consumption and negative environmental impact. In the recent time, application of the novel extraction techniques, such as ultrasound-assisted extraction, have been evaluated [22,23]. According to the literature, these procedures provide numerous benefits (solvent saving, shorter time of extraction and high extract quality). In addition, these new techniques support the concept of "green" solvent, which is aimed to minimize the negative environmental impact from the utilization of large amounts of solvents in extraction process. It has shown that simple alcohols, as well as alcohol-water mixtures are more environmentally favorable solvents [22].

Despite the fact that complete polyphenolic profile of *T. serpyllum* and its activity has been already published by several authors [6,9,14], there is no comprehensive study regarding the effect of different methods and conditions on the extraction of polyphenolic compounds from *Serpylli herba*. In two studies the impact of a single factor (type of solvent and temperature)

has been investigated, but the influence of other parameters, as well as the interactions between them, have not been examined [24,25].

The aim of the present study was to optimize extraction of polyphenols from *T. serpyllum* by investigating factors of interest, particle size, solid-to-solvent ratio, solvent type and extraction time. Moreover, three extraction procedures, maceration, heat-assisted extraction (HAE) and ultrasound-assisted extraction (UAE) by using ultrasound probe were compared in terms of TP yield. Maceration is traditional and less complex procedure of polyphenol extraction from plant material and it is particularly convenient for thermolabile compounds. On the other hand, high temperature involves faster polyphenol kinetics and improved extraction efficiency [22,25]. Furthermore, extraction of polyphenolic compounds could be enhanced with the application of ultrasound, which stands out as a good alternative extraction method, because of its high efficiency [26]. Since the objective of our study was to obtain extract abundant in polyphenolic compounds that would be further used for food and medicals, the choice of solvent was a critical step. Water and ethanol are, from toxicological point of view, much safer and more suitable than other solvents for the food and pharmaceutical industry [27]. Accordingly, in this study only ethanol, water and their mixtures, were tested. Finally, parameters that could potentially affect the extraction yield were statistically evaluated through full factorial experimental design in order to recognize optimal combination of factor levels for the best extraction result. In addition, qualitative and quantitative analyses of individual polyphenols were performed using LC/MS and HPLC methods.

2. Materials and methods

2.1. *Plant material*

Air-dried aerial part of *T. serpyllum* in full flowering phenophase was commercially purchased from the Institute for Medicinal Plant Research "Dr Josif Pančić", Belgrade, Serbia. According to Yugoslav Pharmacopoeia [28], dried herb was grinded in the industrial mill and separated into 5 size fractions (0.3, 0.5, 0.7, 0.9 and 1.5 mm) by analytical sieving. For the purpose of this experiment, only particle sizes of 0.3, 0.7 and 1.5 mm were used, in order to cover the smallest, medium-size and the largest particles.

2.2. *Reagents and standards*

Ethanol (Fisher Science, UK) and distilled water were used as the extraction solvent. Distilled water was purified through a Simplicity UV® water purification system (Merck Millipore, Merck KGaA, Germany). Folin-Ciocalteu reagent (Merck, Darmstadt, Germany) and sodium carbonate (Fisher Science, UK) were employed for the quantification of total polyphenols, while gallic acid (Merck, Darmstadt, Germany) was used as calibration standard. Sodium nitrite (Alkaloid, Macedonia), aluminum chloride (Sigma-Aldrich, Germany) and 1M sodium hydroxide (Alfapanon, Serbia) were used for determination of total flavonoids, while catechin (Sigma Chemical, USA) was used for calibration curve. Acetonitrile, LiChrosolv gradient grade, was purchased from Merck KGaA (Darmstadt, Germany), formic acid (98%) was obtained from Lachema (Brno, Czech Republic).

Rosmarinic acid, caffeic acid, luteolin 7-glucoside and apigenin 7-glucoside were purchased from Sigma-Aldrich, USA.

2.3. *Extraction procedures*

2.3.1. *Maceration*

Maceration was carried out on the shaker (Unimax 1010, Heidolph, Germany) at room temperature using three particle sizes (0.3, 0.7 and 1.5 mm), three solid-to-solvent ratios (1:10, 1:20 and 1:30), five types of solvent (30, 50, 70 and 96% ethanol and water) and five extraction times (5, 15, 30, 60 and 90 min). In our preliminary screening, slight decline in TP yield at 90 min, particularly after 120 and 150 min (data not shown) could be noticed as a result of maceration. This is in accordance with the previous findings that prolonged extraction time causes decrease of TPC in ethanol extracts of wild sage already at 60 and 90 min, as well as in extracts of henna after 90 min [20,29]. Extracts were obtained by maceration of 2.50 g, 1.25 g and 0.83 g of plant material in an Erlenmeyer flask (100 mL), according to the solid-to-solvent ratios, with 25 mL of every type of extraction solvent. The flasks were covered with aluminum foil to avoid light exposure and ethanol evaporation. Obtained extracts were filtered through a cellulose filter (fine pore, 0.45 μm) and reconstituted filtrates were properly diluted with the solvent to the required concentrations.

2.3.2. *Heat-assisted extraction (HAE)*

HAE was applied for polyphenol extraction using the same factor levels as in previous case and three extraction times (5, 15 and 30 min) at 80°C, in the incubator shaker (KS 4000i control, IKA, Germany). In our preliminary tests (data not shown), we have examined influence of increased temperature in fixed maceration conditions: 0.3 mm of particle size, 1:30 ratio, 50% ethanol and 15 min, proposed in Miron et al. [25], where yield of TP became higher with increasing temperature. According to these findings level of 80°C was maintained for experiment of HAE. In the same preliminary experiment, after 60 and 90 min of exposure to the elevated temperature, there has been a significant drop in the values of TP in *Serpylli herba* extracts. This result is in agreement with Meterc et al. [30], where the amount of polyphenols from green tea started to decrease already after 15 min at 80°C. Extraction procedure was the same as for the maceration previously described.

2.3.3. *Ultrasound-assisted extraction (UAE)*

UAE was performed using the ultrasonic processor of 750 W output with a 20 kHz converter (Sonics, USA) and a solid titanium probe of 19 mm diameter at 80% of amplitude (the same particle size, extraction time, solid-to-solvent ratio and type of solvents as in HAE). In the preliminary experiments, the amplitude was evaluated at three factor levels (20, 50 and 80%), covering the whole equipment's amplitude working range (data for 20 and 50% of amplitude not shown), while other independent variables were kept constant, like in case of HAE. The maximum response was observed at 80% of amplitude, which is in accordance with the observations of Horžić et al. [31], so this value was appointed for further optimization of the extraction process. The herbal samples (10 g, 5 g and 3.33 g) were extracted with 100 mL of

the appropriate solvent (larger volume was applied because of technical properties of the ultrasonic probe), filtered through cellulose filter under vacuum and filled up to 100 mL with appropriate solvents.

All extracts were prepared in triplicate and stored at 4°C in a dark place until further analyses.

2.4. Determination of the total polyphenols

The total polyphenolic content (TPC) was evaluated spectrophotometrically using modified Folin-Ciocalteu method [32]. Properly diluted sample (100 µL) was added to 6 mL of water and mixed with previously diluted Folin-Ciocalteu reagent with water (1:2 ratio). Subsequently, 1.5 mL of sodium carbonate solution (200 g/L) was added in a flask and the volume was made up to 10 mL with water. The samples were mixed and left in the dark at room temperature for 2 hours. The absorbance was measured at 765 nm against a blank probe (water, extraction solvent, FC reagent and sodium carbonate solution in the same ratio as in the samples), using the UV Spectrophotometer UV-1800, Shimadzu, Japan. Triplicate analyses were done for each extract. Gallic acid was used as a standard (100-700 mg/L) for calibration curve, and TPC was expressed as milligrams of gallic acid equivalents per liter of extract (mg GAE/L).

2.5. Determination of the total flavonoids

The total flavonoids content (TFC) in selected water and ethanol extracts was determined by a colorimetric assay described by Barros et al. [33]. Properly diluted extract (250 μ L) was mixed with 5% sodium nitrite solution (75 μ L) and water (1.25 mL). After 5 min, 8.8% aluminum chloride solution (150 μ L) was added and after 6 min 1M sodium hydroxide solution (500 μ L), and the mixture was adjusted to 3 mL with water. The absorbance was measured at 510 nm against the blank (all reagents except the extract), using the UV Spectrophotometer UV-1800, Shimadzu, Japan. Catechin monohydrate was used to calculate the calibration curve (0.05-0.3 g/L), and results were expressed as milligrams of catechin equivalents per liter of extract (mg CE/L).

2.6. *LC/MS analysis*

LC/MS analysis was performed on an Agilent MSD TOF coupled to an Agilent 1200 series HPLC, and reverse phase Lichrospher RP-18 (Agilent) analytical column (250 x 4 mm i.d., 5 μ m particle size) was used. The mobile phase consisted of solvent A (0.2% solution of HCOOH in water) and mobile phase B (acetonitrile). The injection volume was 2 μ L, and elution at 1.4 mL/min with gradient program (0-2 min 5-20% B, 2-20 min 20-55% B, 20-25 min 80% B, 25-27 min 80-100% B). Mass spectra were acquired using an Agilent ESI-MSD TOF. Drying gas (N_2) flow was 12 L/min; nebulizer pressure was 45 psig; drying gas temperature was 350°C. For ESI analysis, the parameters were: capillary voltage, 4000 V; fragmentor, 140 V; skimmer, 60 V; Oct RF V 250 V, for negative mode. The mass range was from 100 to 3200 m/z. Processing of data was carried out with the software Molecular Feature Extractor. The identification of individual phenolic acids and flavonoids was done in

selected wild thyme extract (50% ethanol as solvent; 1:30 solid-to-solvent ratio; 0.3 mm particle size and 15 min of UAE).

2.7. *HPLC analysis*

HPLC analyses were carried out on Agilent series 1200 RR HPLC instrument (Agilent), with DAD detector, on a reverse phase Lichrospher RP-18 (Agilent) analytical column (250 x 4 mm i.d., 5 μ m particle size). The mobile phase and gradient elution were the same as for LC/MS analysis. The injection volume was 10 μ L, flow was adjusted to 0.8 mL/min and detection wavelengths were set at 280 and 330 nm. Identification of caffeic and rosmarinic acid was based on comparison of retention time and UV spectra with those from the authentic standards, while the flavonoids were identified according to its characteristic UV spectra. Quantification of caffeic and rosmarinic acid was done using calibration curves of authentic standards, whereas detected flavonoids were quantified as equivalents of luteolin 7-glucoside or apigenin 7-glucoside, and salvianolic acids as equivalents of rosmarinic acid. The quantification of individual phenolic acids and flavonoids was done in selected wild thyme extracts (30% and 50% ethanol as solvent; 1:20 and 1:30 solid-to-solvent ratio; maceration, HAE and UAE; 0.3 mm particle size and 15 min of extraction). All analyses were done in triplicate. The results are presented as micrograms per mL of the extracts.

2.8. *Statistical analysis*

In the present study, all measurements and analyses were performed in three replicates. The process of extraction was optimized by using analysis of variance (one-way ANOVA) and experimental design (full factorial design) for a higher extraction yield from *Serpylli herba*. All the analyses were carried out using the statistical software, STATISTICA 7.0. The data in tables and graphs are presented as mean \pm standard deviation. Differences were considered statistically significant at $p < 0.05$. Independent variables were particle size, solid-to-solvent ratio, solvent type, extraction time, temperature and ultrasound, whereas TPC and TFC were dependent variables. First, data were subjected to one-way ANOVA, in order to test significant impact of the operating conditions on response of extraction, at the 95% of confidence level. Subsequently, multiple comparison tests were performed using Duncan's test to assay differences between the arithmetic means ($p < 0.05$). Experimental design, as a collection of statistical and mathematical tools, was useful for developing, improving and optimizing process of extraction, in which polyphenols yield (dependent variable) was influenced by a few factors (independent variables). Besides that, it has assessed the interaction between each factor to accomplish the most effective optimization of the extraction process with the aim to maximize yield of total polyphenols from *T. serpyllum*.

3. Results and discussion

3.1. One-way ANOVA

One-way ANOVA analysis followed by Duncan's multiple range test were implemented to determine how significant the influence of the extraction conditions (particle size, solid-to-

solvent ratio, solvent type, extraction time, temperature and ultrasound) was on TP yield. Two most promising levels of each observed factor were selected for further experimental design. Also, this statistical tool was used to show the effect of solid-to-solvent ratio, solvent type and extraction technique on concentration of total flavonoids.

3.1.1. *Effect of particle size on total polyphenols*

One of the tested factors affecting the extraction results was found to be particle size. The impact of particle size (0.3, 0.7 and 1.5 mm) on the amount of TPC is shown in Table 1. The highest TPC values were achieved during extraction of 0.3 mm diameter particles, in all tested procedures: maceration, HAE and UAE (18.1, 22.1 and 22.8 mg GAE/L, respectively). The lowest extraction yield was obtained with 1.5 mm particles, in maceration (15.0 mg GAE/L). In the extracts obtained by maceration statistically significant improvement of TPC was noticed as particle size decreased, HAE favored the smallest particle size, while in UAE there was no statistical difference between analyzed levels regarding this factor. Enhancement of TP yield in HAE and UAE comparing with maceration strongly depends on size of plant particles, while the internal diffusion may be the limiting step during the extraction process [26]. Furthermore, according to Rai et al. [34] if the internal mass transfer constitutes dominant mechanism in the extraction process compared to external mass transfer, the degree of fragmentation can significantly influence the extraction yield. The highest yield of polyphenol is principally achieved with the finest particles, because of the increased active surface area and the enhanced contact of plant material with solvent, which both consequently also lead to the reduction of extraction time [35]. In addition, it was

previously reported that the maximal TP yields were produced using the highest degree of grinding, i.e. the highest level of destroyed cells, which indicated that the convective mass transfer had the dominant effect [36]. However, the use of very small fragments may cause technical difficulties, during the mixing and filtration process. Thus, it is important to investigate the size of herbal particles that will provide the best extraction yield [35]. The previous studies of polyphenols extraction have pointed that decrease in particle sizes of grinded *Ginkgo biloba* leaves, *Punica granatum* peels, as well as *Vitis vinifera* seeds and stems induced enhancement in TPC [19,36,37]. Furthermore, temperature and particle size, as well as their interaction had significant impact on extraction kinetics [35]. According to the literature as the temperature of extraction increases higher content of TP was recorded during extraction of the smallest particle fraction of grape seeds and parsley flakes [38,39]. As it was mentioned earlier, only UAE procedure did not result in statistical difference among observed levels regarding the influence of particle size on TPC yield (Table 1). This could be explained by the mechanism of ultrasound extraction, which includes reduction of the particle size (approximately 5%), damage of the cell walls and modification of microstructure, intensification of the solvent penetration in herbal cells and the instantaneous release of the polyphenolic compounds into the surrounding medium, caused by acoustic cavitation and thermal effects, regardless of the initial size of plant particles [18,40]. In a conclusion, since TP have achieved maximal yield with particle size of 0.3 mm, followed by 0.7 mm, these factor levels were selected for further factorial design.

3.1.2. Effect of solid-to-solvent ratio on total polyphenols

The results of the influence of solid-to-solvent ratio on the extraction efficiency are listed in Table 1. Comparing the matching solid-to-solvent ratio factor levels' TPC for each extraction procedure we can conclude that extracts obtained by maceration had the lowest TPC (13.7 – 18.9 mg GAE/L), while extracts obtained by UAE had the highest TPC (16.9 – 27.5 mg GAE/L). For each extraction procedure TP yield was lower as solvent volume decreased. The reason could be in the excessive amount of herbal drug, which caused the rise of viscosity and thus inhibited diffusion of polyphenols through the extraction medium. Results of our experiment showed that all tested levels of solid-to-solvent factor in all extraction procedures differ significantly. These differences in maceration could be explained by high solubility of polyphenols in hydroalcoholic solution, particularly in their glycoside form, which provided larger diffusion rate at 1:30 solid-to-solvent ratio [20,22]. Regarding HAE, the explanation could be also supported by the fact that high temperature decreases solvent viscosity and improves diffusion and consequently mass transfer of the molecule, which allowed faster extraction and intensification of the release of polyphenols into extraction medium, therefore rapidly reaching saturation of solvent [22]. Furthermore, statistical differences among ratios in UAE were the most probably due to the tissue destroying mechanism produced by the ultrasound waves on the plant material. According to Paz et al. [41] when the ultrasound generates changes in the plant material (disruption of cell walls, reduction of particle size and the increase of contact surface) at the same time it enhances the mass transfer rate, solvent permeability in cells, secondary metabolites diffusion, and thus faster saturation of the liquid. On the contrary, the presence of a large amount of plant material (1:10 ratio) in our case, contributed to the attenuation of the ultrasonic waves and the active part was restricted to a zone located in the vicinity of the ultrasound probe [26]. Consequently, in all three methods

the increase in solid-to-solvent ratio was resulted in the prevention of saturation of the extraction medium and the increment of the extraction yield. Several studies have found that the TPC increased quickly with the increase of ratio, at room temperature, as well as by use of high temperature or ultrasound waves [17,38,41,42,43].

Since the criteria for selecting the factor levels for further analysis was maximum of TPC, 1:20 and 1:30 ratios were selected to be included in full factorial design.

3.1.3. *Effect of solvent type on total polyphenols*

The effect of four solvents with different polarities (30, 50 and 70% ethanol and water) on TPC was tested (Table 1). Initially one more level of solvent type factor was included in analysis (96% ethanol), but TPC yields for this factor level were very low in comparison with other factor levels and consequently its variance contribution violated assumptions for further parametric statistics, so data for this level have been removed from further analysis (Supplement 1). The TP yield was maximized at 50% ethanol, in all extraction procedures (19.6, 22.6 and 24.9 mg GAE/L, for maceration, HAE and UAE, respectively) and this level was significantly different from closest two levels (30% and 70% ethanol), between which was no statistical difference (except in maceration). Water extraction had the lowest TPC yield in HAE and UAE procedures, while in the case of maceration, although the lowest, no statistical significance between water and 70% ethanol levels has been recorded. Generally, in a binary solvent system, one solvent could enhance the solubility of the polyphenols, while the other could improve desorption [22]. Also, the amount of water in these mixtures had significant impact on the polyphenols extraction. Increasing ethanol concentration from 30%

to 50% resulted in a decrease in the dielectric constant of the extraction medium and therefore enabled easier separation of the solvent molecules and the entry of the solute molecules between them [44]. These results suggested that most of the polyphenols from wild thyme had a relatively high polarity and they were preferentially extracted with mixture of ethanol and water, especially when they were in a glycoside form. Moreover, addition of small quantity of water to organic solvent has created a more polar medium and breaking hydrogen bonding has facilitated the extraction of polyphenols. Subsequently, solvent mixture could extract polyphenols from both ends of the polarity (highest and low polarity compounds) [29]. Also, the increase in effective swelling of the plant material by water has helped enhancement the surface area for solvent-solid contact [43]. Our results are in accordance with the observations of Costa et al. [45], where 50% ethanol was the most efficient solvent for the extraction of antioxidant polyphenols from *Thymus lotocephalus*. Miron et al. [25] have reported that maximum amount of TP was obtained using a mixture of ethanol:water (1:1) for wild thyme at 100°C. Moreover, Mustafa and Turner [22] have reported that the polarity of solvent decreased substantially by applying high temperature during the extraction, which made water and ethanol suitable solvents to extract polar, moderately polar and non-polar organic compounds at increased temperature. Chizzola et al. [46] have established that the best result of TP from *Thymus* species was obtained with 60% ethanol compared to other ratios of the ethanol/water mixture, while 96% ethanol has extracted the minor yield of TP by extracting in water and ultrasound bath. Fecka and Turek [24] have pointed that the most suitable medium for extracting polyphenols from thyme and wild thyme was 50% alcohol/water in UAE procedure, while neither water nor alcohol could completely extract polyphenol compounds. Due to very low polyphenol extraction yields

proven in our and in several previous studies, mono-solvent system (pure ethanol or water) is not recommended as the most convenient solvent for extraction of polyphenolic compounds [3,25,46].

Regarding TP content, the highest extraction rate was achieved by 50% ethanol, then by 30 and 70% ethanol in all extraction techniques. Since the screening data showed that there was no significant difference among 30 and 70% ethanol extracts and because of the cost of solvent, it was decided to choose 30 and 50% ethanol for further factorial design.

3.1.4. Effect of extraction time on total polyphenols

The impact of time on the extraction of polyphenolic compounds from *T. serpyllum* was conducted in maceration at five different extraction times (5, 15, 30, 60 and 90 min) and in HAE and UAE at three extraction times (5, 15 and 30 min). The obtained results are presented in Table 1. The maximum TP yield was achieved at 60 min in maceration (18.1 mg GAE/L) and at 15 min in HAE and UAE (20.6 and 23.1 mg GAE/L, respectively). According to our extracts, all ethanol and water extracts at 5 min are poor source of polyphenols (13.1, 18.4 and 21.6 mg GAE/L). In general, according to Fick's second law of diffusion, by extension of the extraction time, the quantity of extracted polyphenols compound is enhanced [47]. However, our results indicated that there was no statistically significant difference between exposure time, except in maceration and HAE, where at extraction time of 5 min TPC was significantly different compared to other extraction times. The reason could be in occurrence of two stages in polyphenol extraction: an initial increase of the concentration of polyphenols in the beginning of the process (for the first 15 min), followed by slow

extraction (after 60 min) [42]. Our results are comparable to the previous findings of Fecka and Turek [24], who have reported that there wasn't any significant difference between time of extraction (15 and 30 min) in hot aqueous and methanol extracts from thyme and wild thyme. In addition, Dent et al. [20] reported that the exposure time in extraction from wild sage did not affect the TPC significantly. Vergara-Salinas et al. [48] have also pointed that time (5-30 min) had no statistically significant effect on extraction of TP from *Thymus vulgaris* at high temperature. Furthermore, the influence of time wasn't significant in both maceration and UAE, in case of optimization of extraction of polyphenols from *Urtica dioica* [49]. High temperature and long exposure time together could also reduce the TP yield, because of temperature sensitivity and enzymatic degradation and oxidation of polyphenolic compounds in aqueous phase, as well as polymerisation among insoluble compounds [48]. Moreover, the extended sonication time could also damage extracted natural antioxidants and degrade the quality of extracts, due to generation of free radicals by the ultrasound waves [31].

Since extracts obtained by HAE and UAE at 15 and 30 min had the highest TPC, these two extraction times were subjected for further factorial design. Although the highest TPC in maceration was obtained at 60 min, 15 and 30 min have been selected for further analysis, because there was no significant difference between extraction time after 15 min, as well as to minimize energy cost.

3.1.5. Effect of high temperature on total polyphenols

The yield of TP in extracts obtained at 80°C was higher than in the extracts obtained at room temperature (25°C), for each observed factor level (Table 1). Even at first 5 min of extraction yield of TP in extracts obtained by HAE was increased for 40% in comparison with the extracts obtained by maceration (18.4 and 13.1 mg GAE/L, respectively). Comparing TPC of the extracts obtained by maceration and HAE it could be concluded that the similar amounts of polyphenols were detected after 60 min of maceration and 5 min of HAE (18.1 and 18.4 mg GAE/L, respectively). According to Mustafa and Turner [22], the use of thermal energy improves the efficiency of the extraction by disruption of cellular structures. This feature leads to increased cell membrane permeability and breakdown of secondary metabolites-herb matrix interactions (polyphenols with lipoproteins), what cause enhancement of polyphenols solubility and mass transfer. The increment of solvent temperature could also decrease surface tension and consequently enhance wetting of the plant material resulting in more efficient extraction [48]. High temperature decreases viscosity of the extraction medium, helping the solvent to penetrate the plant particles and resulting in an improved and accelerated extraction process [25]. Our results are in accordance with the previously published reports, where higher temperature had a positive influence on the extractability of polyphenolic compounds in water-ethanol extracts of herbs from family *Lamiaceae* [20,25]. Moreover, Hossain et al. [50] have pointed that temperature was the dominant factor in maximizing the TPC values of rosemary, marjoram and oregano. Also, box plot in Figure 1 indicates that TP yield achieved in HAE was significantly higher than in maceration. Comparing to maceration and taking into consideration the industrial requirements such as high extraction yield for a shorter time, HAE could be recommended as convenient technique for polyphenols extraction from wild thyme.

3.1.6. Effect of ultrasound on total polyphenols

The results have showed that TPC was higher in the extracts obtained by UAE compared with extracts obtained by maceration and HAE observed factor levels (Table 1). After 5 min of UAE the amount of TP was 64.3% higher than in the extracts at room temperature and 17.3% higher than in the extracts obtained by HAE. TPC obtained by UAE after 5 min of extraction was higher than by maceration after 60 min. This behavior could be explained through the mechanism of plant tissue destruction by ultrasound waves, which as mechanical vibrations travel inside of plant cells and cause expansion and compression cycles during movement through the extraction medium [26]. The expansion can create bubbles in a liquid and provoke local rise of temperature and negative pressure. The bubbles form, grow and finally occurs the cavity collapse which is asymmetric and produces high-speed jets of liquid, which have strong impact on the solid surface. These mechanical and thermal effects induce destruction of cell walls, release of cell contents, as well as a greater penetration of extraction medium into herb matrix and intensify mass transfer. Consequently, efficient cell disruption and effective mass transfer, as two major factors, lead to the increment of extraction yield in use of ultrasound waves [31,40]. Very high content of bioactive compounds in UAE extracts, as well as less extraction time compared to conventional solid/liquid extraction, were demonstrated in several publications [31,50,51,52]. UAE has various advantages over conventional extraction techniques (maceration and HEA), such as the increase of extraction yield, improvement of the extract quality and very important property for industrial requirements - faster kinetics. In comparison to other modern extraction methods like

microwave- and high hydrostatic pressure-assisted extraction and supercritical fluid extraction, the ultrasound instrument has lower price and it is easier to work on it. Additionally, any solvent could be used for extracting a wide range of pharmacologically and biologically active phytochemicals, as well as thermosensitive compounds [26]. Differences in TPC yield among tested extraction techniques are presented through box plot in Figure 1, where yield achieved in UAE was significantly higher than in maceration and HAE. Consequently, UAE could be proposed as an efficient technique for extraction of bioactive polyphenolic compounds from *Serpylli herba*.

3.2. Experimental design (total polyphenols)

In this study, a complete factorial design was employed to determine the best combination of extraction variables. Following the results of the preliminary screening study, particle size (0.3 and 0.7 mm), solid-to-solvent ratio (1:20 and 1:30), type of solvent (30 and 50% ethanol) and extraction time (15 and 30 min), each at two levels, were used for the experimental design of the extraction process optimization. In the first factorial design, 2-level screening design (Plackett-Burman) has been conducted. All four observed factors have been represented through two selected levels in 2^4 full factorial design. The purpose of this analysis was to establish which factors had significant effect on dependent variable (TPC). The Pareto charts in Figure 2 represent all factors that influence the yields of polyphenolic compounds. The lengths of the horizontal bars are proportional to the absolute magnitude of the estimated effects, while the dashed line represents the minimum value of statistically significant effects with respect to TPC (95% of the confidence interval). It can be observed

that solvent type (factor 3) and solid-to-solvent ratio (factor 2) were the most significant factors for the TP yield in maceration, whereas particle size (factor 1) and extraction time (factor 4) had lower effects (Figure 2A). Similar to our findings, in optimization of polyphenol extraction from *Urtica dioica* leaves, type of solvent has influenced TPC significantly, while effect of time was not significant [49]. Furthermore, solid-to-solvent ratio was the second relevant factor for obtaining high yield of TPC from dried chokeberry using maceration, whereas extraction time was non-significant factor [42]. From the Figure 2B, it can be concluded that solvent type had a dominant effect on the extraction yield in HAE, followed by particle size and solid-to-solvent ratio, whereas time of extraction had no significant influence on extracted TPC. Our results are in accordance with the literature data, where type of extraction solvent was significant in polyphenols extraction from *Rosmarinus officinalis*, *Origanum majorana*, *O. vulgare*, *Inga edulis* and *Lawsonia inermis*, at elevated temperature [29,35,50]. Furthermore, size of plant particles and solid/liquid ratio have influenced the amount of polyphenols compounds extracted from parsley flakes at high temperature, while no significant changes in the extraction yields were observed at different time levels [39]. In Figure 2C, influence of observed factor in UAE has been explored, where solid-to-solvent ratio, particle size and solvent type were the variables that influenced the TPC mostly. Duration of the extraction again had no significant effect. These results are comparable with results of Paz et al. [41], who reported that for the *Jatropha dioica* plant, solid/liquid ratio was a crucial factor affecting TPC yield in UAE, while the ethanol concentration is the second important factor. Also, in the same study the extraction time has exhibited a weak effect on the concentration of polyphenols from *Eucalyptus camaldulensis*. Furthermore, in UAE of polyphenols from orange peel, ethanol:water ratio had significant

influence [51]. In all three extraction techniques, time of extraction was the least relevant factor for obtaining TP, hence this factor in our experiment was excluded from further optimization of the extraction process and the optimum extraction time was fixed at 15 min. Moreover, shorter extraction time could be accepted as more convenient regarding energy efficiency.

In the second factorial design, experimental data from the previous investigation (2^4 factorial screening design) have been introduced to 2^3 full factorial design (three independent variables which had significant effect in screening design: particle size, solid-to-solvent ratio and solvent type, each at two levels). A new full factorial design was applied to assay the influence of factors on the TP yield and to select the optimal conditions of the polyphenols extractions from *Serpylli herba* (Table 2). Additionally, this statistical method has allowed the evaluation of the interactions among the factors. The effects and corresponding regression coefficients of factors and interactions of two factors and probability for 2^3 full factorial design are presented in Table 3. As can be seen in Table 3, solid-to-solvent ratio was the most significant factor for polyphenols extraction during maceration, followed by type of solvent and particle size, whereas all interactions between factors were not decisive. In HAE the ethanol concentration was the dominant factor. The second important factor for maximizing polyphenols yield was size of herbal particles, followed by the significant interaction between particle size and solid-to-solvent ratio, which indicated that the effect of the particle size was not the same at all solid-to-solvent ratios. In this extraction procedure solid-to-solvent ratio has significantly affected TP yield, but its value was lower than solvent type and particle size. Our experimental results regarding UAE indicated that solid-to-solvent ratio had the strongest influence on TPC, followed by particle size and ethanol concentration

with lower absolute values (Table 3). Since the interaction of particle size and solid-to-solvent ratio was significant, we can conclude that the impact of the particle size depends on the used ratio levels. In the case of UAE the interaction effect of particle size-solvent type and solid-to-solvent ratio-solvent type was not statistically significant, as in the case of HAE. Results of the 2^3 full factorial design, the observed and predicted values of TPC are listed in Table 2. The highest polyphenols concentration (measured value) in all extraction techniques was reached under the following parameters: the lowest particle size (0.3 mm), the highest solid-to-solvent ratio (1:30) and 50% ethanol (26.6, 29.8 and 32.7 mg GAE/L for maceration, HAE and UAE, respectively). The model has predicted maximum extraction efficiency under the same conditions: particle size of 0.3 mm, 1:30 ratio and 50% ethanol (26.7, 29.5 and 33.1 mg GAE/L, for maceration, HAE and UAE, respectively). The lowest TPC in all methods was observed in combination of 0.7 mm particle size, 1:20 solid-to-solvent ratio and 30% ethanol solvent (18.6, 19.8 and 23.6 mg GAE/L, for maceration, HAE and UAE, respectively). The model has predicted the minimum TP yield (18.5, 20.1 and 23.2 mg GAE/L, for maceration, HAE and UAE, respectively) under the same operational conditions as for observed values. Differences among the predicted results and the experimental data were minimal (< 2%). Therefore, full factorial design could be suggested as an adequate model for optimization of the extraction process of polyphenolic compounds from *T. serpyllum*.

According to the results of our experiment, it could be concluded that the optimal extraction conditions for obtaining the wild thyme extract most abundant in TP are: particle size, 0.3 mm; solid-to-solvent ratio, 1:30; solvent type, 50% ethanol; time, 15 min; by using ultrasound probe.

3.3. Influence of selected factors on total flavonoids

The influence of different solid-to-solvent ratios (1:10, 1:20 and 1:30), solvent types (30, 50 and 70% ethanol and water) and extraction techniques (maceration, HAE and UAE), on TF yield was tested, while particle size of 0.3 mm and extraction time of 15 min were fixed. The results of effects of solid-to-solvent ratio and solvent type on TPC in selected *T. serpyllum* extracts are shown in Figure 3. In all extraction procedures, solid-to-solvent ratio had significant influence on TF yield and it was higher as solvent volume increased, as in the case of total polyphenols, which was in accordance with literature data [43]. Further, the highest TF yield was reached with 50% ethanol in all three extraction techniques (14.3, 12.4 and 16.7 mg CE/L, for maceration, HAE and UAE, respectively), while the lowest TFC was determined in water extracts, in the same manner as in the case of TPC. Horžić et al. [31] have reported that the best flavonoids extraction performance was achieved with aqueous ethanol as an extraction medium, in comparison to water, by using conventional extraction and ultrasound probe. Furthermore, catechins have represented a smaller amount of flavonoids in aqueous infusions from wild thyme [3]. Moreover, it was found that TFC increased with 50% of ethanol, because ethanol interacted with the flavonoids through non-covalent interactions and promoted a rapid diffusion into the extraction medium [21,53]. In extracts obtained by UAE the amount of total flavonoids was statistically significant higher than by using maceration and HAE, between which there was no statistically significant difference. Our results are in accordance with the previous findings that the highest content of flavonoids in yellow tea was obtained by ultrasound probe assisted extraction, while lower

TFC was detected in conventional extraction [31]. Silva et al. [35] have shown negative influence of high temperature on the response of total flavonoids. Lower value of TFC obtained in HAE could imply that flavonoid compounds are more sensitive to increased temperature than to ultrasound. These results are favorable for further implication of ultrasound waves in wild thyme extraction, especially for flavonoids-rich extracts.

3.4. *LC/MS and HPLC analyses results*

Using LC/UV/MS technique, 9 polyphenolic compounds were found in the studied extract (Table 4). According to their UV spectra, the polyphenolic compounds were classified on two main groups: caffeic acid derivatives (CA) and flavonoids (FL). Molecular formula of the analytes was revealed by exact mass measurements of their deprotonated molecular ions, performed using a time-of-flight (TOF) mass spectrometer in negative polarity mode. Molecular formula determinations were performed by Molecular Feature Extractor program, taking into account m/z values and isotopic abundance patterns for all ion species noticed for respective compound. The spectral data of the identified compounds were compared to those of literature [54,55,56]. Further, the quantification of individual phenolic acids and flavonoids in selected wild thyme extracts was carried out using HPLC method, and the results are shown in Table 5. The main phenolic acid was rosmarinic acid, followed by salvianolic acid K isomer and salvianolic acid I. Boros et al. [14] also showed that rosmarinic acid was the dominant compound in *Thymus* species. Among flavonoids, the dominant were luteolin derivatives, such as luteolin 7-*O*-glucuronide and 6-hydroxyluteolin 7-*O*-glucoside, followed by apigenin glucuronide which was in accordance with the literature data

[14,24,25]. The highest content of rosmarinic acid, salvianolic acid K isomer, salvianolic acid I, 6,8-Di-C-glucosylapigenin, 6-hydroxyluteolin 7-O-glucoside and luteolin 7-O-glucuronide was achieved with extraction parameters of 50% ethanol and 1:30 ratio, in UAE, which was in accordance with previously obtained results of TPC and TFC. On the other hand, caffeic acid and apigenin glucuronide were obtained in the highest amount under experimental conditions of 50% ethanol and 1:20 ratio by using ultrasound probe.

4. Conclusion

This study was the first attempt to evaluate the effects of different particle size, solid-to-solvent ratio, type of solvent and time on the extraction of polyphenols from *Serpylli herba* using various extraction techniques (maceration, HAE and UAE). The results indicated that particle size, solid-to-solvent ratio, solvent type, and extraction procedure have significantly affected the content of total polyphenols, while the extraction time has not been relevant factor. According to TPC, the efficiency of the extraction procedures for all variables is ranked by significance in the following order: UAE > HAE > maceration, whereas total flavonoids yield was significantly higher in UAE, while between maceration and HAE there was no statistically significant difference. With regard to the experimental design, the best extraction performance was achieved with the use of ultrasound probe, particularly in combination of particle size of 0.3 mm, 1:30 ratio and 50% ethanol. Considering that the predicted and experimental values were approximately the same, full factorial design can be assumed as an adequate model to optimize the process of polyphenols extraction from *Serpylli herba*. UAE could be used for future polyphenols extraction, due to obtained high

TP and TF yield, short extraction time, and low degradation of the extracted compounds, compared to other tested extraction methods. Furthermore, LC-MS analysis detected presence of two classes of polyphenols compounds: phenolic acid (chlorogenic acid, caffeic acid, salvianolic acid K isomer, rosmarinic acid and salvianolic acid I) and flavonoids (6,8-Di-*C*-glucosylapigenin, 6-hydroxyluteolin 7-*O*-glucoside, luteolin 7-*O*-glucuronide and apigenin glucuronide). According to HPLC, the dominant compound was rosmarinic acid, followed by salvianolic acid K isomer, salvianolic acid I and luteolin 7-*O*-glucuronide. Moreover, this study was an initial step in production of polyphenols-rich wild thyme extracts aimed to be used for formulation of foodstuffs and medicines. Further research concerning the antioxidant and other biological and pharmacological activities of these extracts, as well as encapsulation of selected extracts are needed.

Acknowledgements

The authors acknowledge their gratitude to the Ministry of Education, Science and Technological Development of Serbia, project numbers 46010 and 46013, as well as Ivona Častvan for ultrasound device.

References

[1] A.A. Farooqi, B.S. Sreeramu, K.N. Srinivasappa, Cultivation of Spice Crops, Universities Press, Hyderabad, India, 2005.

- [2] A.I. Hussain, F. Anwar, S.A.S. Chatha, S. Latif, S.T.H. Sherazi, A. Ahmad, J. Worthington, S.D. Sarker, Chemical composition and bioactivity studies of essential oils from two *Thymus* species from the Pakistani flora, *LWT – Food Science and Technology* 50 (2013) 185-192.
- [3] T. Kulišić, V. Dragović-Uzelac, M. Miloš, Antioxidant Activity of Aqueous Tea Infusions Prepared from Oregano, Thyme and Wild Thyme, *Food Technology and Biotechnology* 44 (2006) 485-492.
- [4] I. Rasooli, S. Mirmostafa, Antibacterial properties of *Thymus pubescens* and *Thymus serpyllum* essential oils, *Fitoterapia* 73 (2002) 244-250.
- [5] S. Jarić, M. Mitrović, P. Pavlović, Review of Ethnobotanical, Phytochemical, and Pharmacological Study of *Thymus serpyllum* L., *Evidence-Based Complementary and Alternative Medicine* 2015 (2015) 1-10.
- [6] S. Aziz, H. Rehman, Studies on the Chemical Constituents of *Thymus serpyllum*, *Turkish Journal of Chemistry* 32 (2008) 605-614.
- [7] M. Nikolić, J. Glamočlija, I.C.F.R. Ferreira, R.C. Calhelha, A. Fernandes, T. Marković, D. Marković, A. Giweli, M. Soković, Chemical composition, antimicrobial, antioxidant and antitumor activity of *Thymus serpyllum* L., *Thymus algeriensis* Boiss. and Reut and *Thymus vulgaris* L. essential oils, *Industrial Crops and Products* 52 (2014) 183-190.

[8] N. Mihailović-Stanojević, A. Belščak-Cvitanović, J. Grujić-Milanović, M. Ivanov, Dj. Jovović, D. Bugarski, Z. Miloradović, Antioxidant and Antihypertensive Activity of Extract from *Thymus serpyllum* L. in Experimental Hypertension, *Plant Foods for Human Nutrition* 68 (2013) 235-240.

[9] T. Kulišić, A. Kriško, V. Dragović-Uzelac, M. Miloš, G. Pifat, The effect of essential oils and aqueous tea infusions of oregano (*Origanum vulgare* L. spp. *hirtum*), thyme (*Thymus vulgaris* L.) and wild thyme (*Thymus serpyllum* L.) on the copper-induced oxidation of human low-density lipoproteins, *International Journal of Food Science and Nutrition* 58 (2007) 87-93.

[10] F. Algieri, A. Rodriguez-Nogales, N. Garrido-Mesa, P. Zorrilla, N. Burkard, I. Pischel, H. Sievers, B. Benedek, B. Feistel, B. Walbroel, M.E. Rodriguez-Cabezas, J. Galvez, Intestinal anti-inflammatory activity of the *Serpylli herba* extract in experimental models of rodent colitis, *Journal of Crohn's and Colitis* 8 (2014) 775-788.

[11] I. Berdowska, B. Zielinski, I. Fecka, J. Kulbacka, J. Saczko, A. Gamian, Cytotoxic impact of phenolic from *Lamiaceae* species on human breast cancer cells, *Food Chemistry* 141 (2013) 1313-1321.

[12] S. Casiglia, M. Bruno, E. Scandolera, F. Senatore, F. Senatore, Influence of harvesting time on composition of the essential oil of *Thymus capitatus* (L.) Hoffmans. & Link. growing

wild in northern Sicily and its activity on microorganisms affecting historical art crafts, *Arabian Journal of Chemistry* (2015) doi: 10.1016/j.arabjc.2015.05.017., in press.

[13] S. Andreescu, M. Hepel S. Sen, R. Chakraborty, *Oxidative Stress: Diagnostics, Prevention, and Therapy*, American Chemical Society, Washington, DC, USA, 2011.

[14] B. Boros, S. Jakabová, Á. Dörnyei, G. Horváth, Z. Pluhár, F. Kilár, A. Felinger, Determination of polyphenolic compounds by liquid chromatography-mass spectrometry in *Thymus* species, *Journal of Chromatography A* 1217 (2010) 7972-7980.

[15] A. Parejo, F. Viladomat, J. Bastida, A. Rosas-Romero, N. Flerlage, J. Burillo, C. Codina, Comparison between the Radical Scavenging Activity and Antioxidant Activity of Six Distilled and Nondistilled Mediterranean Herbs and Aromatic Plants, *Journal of Agricultural and Food Chemistry* 50 (2002) 6882-6890.

[16] J. Čadanović-Brunet, S. Djilas, G. Četković, V. Tumbas, A. Mandić, V. Čadanović, Antioxidant activities of different *Teucrium montanum* L. extracts, *International Journal of Food Science and Technology* 41 (2006) 667-673.

[17] L.G. Alessandro, K. Kriia, I. Nikov, K. Dimitrov, Ultrasound assisted extraction of polyphenols from black chokeberry, *Separation and Purification Technology* 93 (2012) 42-47.

- [18] S. Both, F. Chemat, J. Strube, Extraction of polyphenols from black tea – Conventional and ultrasound assisted extraction, *Ultrasonic Sonochemistry* 21 (2014) 1030-1034.
- [19] M. Çam, Y. Hişil, Pressurised water extraction of polyphenols from pomegranate peels, *Food Chemistry* 123 (2010) 878-885.
- [20] M. Dent, V. Dragović-Uzelac, M. Penić, M. Brnčić, T. Bosiljkov, B. Levaj, The Effect of Extraction Solvents, Temperature and Time on the Composition and Mass Fraction of Polyphenols in Dalmatian Wild Sage (*Salvia officinalis* L.) Extracts, *Food Technology and Biotechnology* 51 (2013) 84-91.
- [21] A. Bucić-Kojić, M. Planinić, S. Tomas, I. Mujić, M. Bilić, D. Velić, Effect of Extraction Conditions on the Extractability of Phenolic Compounds from Lyophilised Fig Fruits (*Ficus Carica* L.), *Polish Journal of Food and Nutrition Sciences* 61 (2011) 195-199.
- [22] A. Mustafa, C. Turner, Pressurized liquid extraction as a green approach in food and herbal plants extraction: A review, *Analytica Chimica Acta* 703 (2011) 8-18.
- [23] A. Oniszczyk, R. Podgórski, Influence of different extraction methods on the quantification of selected flavonoids and phenolic acids from *Tilia cordata* inflorescence, *Industrial Crops and Products* 76 (2015) 509-514.

[24] I. Fecka, S. Turek, Determination of polyphenolic compounds in commercial herbal drugs and spices from Lamiaceae: thyme, wild thyme and sweet marjoram by chromatographic techniques, *Food Chemistry* 108 (2008) 1039-1053.

[25] T.L. Miron, M. Plaza, G. Bahrim, E. Ibáñez, M. Herrero, Chemical composition of bioactive pressurized extracts of Romanian aromatic plants, *Journal of Chromatography A* 1218 (2011) 4918-4927.

[26] L. Wang, C. Weller, Recent advances in extraction of nutraceuticals from plants, *Trends in Food Science & Technology* 17 (2006) 300-312.

[27] J. Tauchen, I. Dorskocil, C. Caffi, E. Lulekal, P. Marsik, J. Havlik, P. Van Damme, L. Kokoska, *In vitro* antioxidant and anti-proliferative activity of Ethiopian medicinal plant extracts, *Industrial Crops and Products* 74 (2015) 671-679.

[28] Yugoslavian Pharmacopoeia V, National Institute for Health Protection, Belgrade, Serbia, 2000.

[29] D.B. Uma, C.W. Ho, W.M. Wan Aida, Optimization of Extraction Parameters of Total Phenolic Compounds from Henna (*Lawsonia inermis*) Leaves, *Sains Malaysiana* 39 (2010) 119-128.

[30] D. Meterc, M. Petermann, E. Weidner, Extraction of green tea and drying with a high pressure spray process, *Hemijaska industrija* 61 (2007) 222-228.

[31] D. Horžić, A. Režek Jambrak, A. Belščak-Cvitanović, D. Komes, V. Lelas, Comparison of Conventional and Ultrasound Assisted Extraction Techniques of Yellow Tea and Bioactive Composition of Obtained Extracts, *Food and Bioprocess Technology* 5 (2012) 2858-2870.

[32] E. Skotti, A. Anastasaki, G. Kanellou, M. Polissiou, Total phenolic content, antioxidant activity and toxicity of aqueous extracts from selected Greek medicinal and aromatic plants, *Industrial Crops and Products* 53 (2014) 46-54.

[33] L. Barros, P. Baptista, I. Ferreira, Effect of *Lactarius piperatus* fruiting body maturity stage on antioxidant activity measured by several biochemical assays, *Food and Chemical Toxicology* 45 (2007) 1731-1737.

[34] A. Rai, B. Mohanty, R. Bhargava, Supercritical extraction of sunflower oil: A central composite design for extraction variables, *Food Chemistry* 192 (2016) 647-659.

[35] E.M. Silva, H. Rogez, Y. Larondelle, Optimization of extraction of phenolics from *Inga edulis* leaves using response surface methodology, *Separation and Purification Technology* 55 (2007) 381-387.

- [36] S. Milošević, Ž. Lepojević, Z. Zeković, S. Vidović, Determination of extraction conditions of *Ginkgo biloba* L. leaves by supercritical CO₂ using response surface methodology, *Hemijska industrija* 65 (2011) 147-157.
- [37] M. Pinelo, P. Fabbro, L. Manzocco, M.J. Nuñez, M.C. Nicoli, Optimization of continuous phenol extraction from *Vitis vinifera* byproducts, *Food Chemistry* 92 (2005) 109-117.
- [38] A. Bucić-Kojić, M. Planinić, S. Tomas, I. Mujić, M. Bilić, D. Velić, Study of solid-liquid extraction kinetics of total polyphenols from grape seeds, *Journal of Food Engineering* 81 (2007) 236-242.
- [39] D. Luthria, Influence of experimental conditions on the extraction of phenolic compounds from parsley (*Petroselinum crispum*) flakes using a pressurized liquid extractor, *Food Chemistry* 107 (2008) 745-752.
- [40] Y. Deng, Y. Zhao, O. Padilla-Zakour, G. Yang, Polyphenols, antioxidant and antimicrobial activities of leaf and bark extracts of *Solidago canadensis* L., *Industrial Crops and Products* 74 (2015) 803-809.
- [41] J.W. Paz, D.M. Márquez, G.M. Ávila, R.B. Cerda, C. Aguilar, Ultrasound-assisted extraction of polyphenols from native plants in the Mexican desert, *Ultrasonics Sonochemistry* 22 (2015) 474-481.

- [42] N. Čujić, K. Šavikin, T. Janković, D. Pljevljakušić, G. Zdunić, S. Ibrić, Optimization of polyphenols extraction from dried chokeberry using maceration as traditional technique, *Food Chemistry* 194 (2016) 135-142.
- [43] Y. Yang, F. Zhang, Ultrasound-assisted extraction of rutin and quercetin from *Euonymus alatus* (Thunb.) Sieb., *Ultrasonics Sonochemistry* 15 (2008) 308-313.
- [44] D.R. Pompeu, E.M. Silva, H. Rogez, Optimization of the solvent extraction of phenolic antioxidants from fruits of *Euterpe oleracea* using Response Surface Methodology, *Bioresource Technology* 100 (2009) 6076-6082.
- [45] P. Costa, S. Gonçalves, P. Valentão, P. Andrade, N. Coelho, A. Romano, *Thymus lotocephalus* wild plants and in vitro cultures produce different profiles of phenolic compounds with antioxidant activity, *Food Chemistry* 135 (2012) 1253-1260.
- [46] R. Chizzola, H. Michitsch, C. Franz, Antioxidative Properties of *Thymus vulgaris* Leaves: Comparison of Different Extracts and Essential Oil Chemotypes, *Journal of Agricultural and Food Chemistry* 56 (2008) 6897-6904.
- [47] B. Nayak, F. Dahmoune, K. Moussi, H. Remini, S. Dairi, O. Aoun, M. Khodir, Comparison of microwave, ultrasound and accelerated-assisted solvent extraction for recovery of polyphenols from *Citrus sinensis* peels, *Food Chemistry* 187 (2015) 507-516.

- [48] J. Vergara-Salinas, J. Pérez-Jiménez, J.L. Torres, E. Agosin, J. Pérez-Correa, Effects of Temperature and Time on Polyphenolic Content and Antioxidant Activity in the Pressurized Hot Water Extraction of Deodorized Thyme (*Thymus vulgaris*), *Journal of Agricultural and Food Chemistry* 60 (2012) 10920-10929.
- [49] U.J. Vajić, J. Grujić-Milanović, J. Živković, K. Šavikin, D. Gođevac, Z. Miloradović, B. Bugarski, N. Mihailović-Stanojević, Optimization of extraction of stinging nettle leaf phenolic compounds using response surface methodology, *Industrial Crops and Products* 74 (2015) 912-917.
- [50] M.B. Hossain, C. Barry-Ryan, A.B. Martin-Diana, N.P. Brunton, Optimisation of accelerated solvent extraction of antioxidant compounds from rosemary (*Rosmarinus officinalis* L.), marjoram (*Origanum majorana* L.) and oregano (*Origanum vulgare* L.) using response surface methodology, *Food Chemistry* 126 (2011) 339-346.
- [51] M.K. Khan, M. Abert-Vian, A.S. Fabiano-Tixier, O. Dangles, F. Chemat, Ultrasound-assisted extraction of polyphenols (flavanone glycosides) from orange (*Citrus sinensis* L.) peel, *Food Chemistry* 119 (2010) 851-858.
- [52] L. Lan-Sook, L. Namhyouck, K. Young Ho, L. Chang-Ho, P.H. Sang, J. Yeo-Won, K. Young-Eon, Optimization of Ultrasonic Extraction of Phenolic Antioxidants from Green Tea Using Response Surface Methodology, *Molecules* 18 (2013) 13530-13545.

[53] B. Singh, H. Sharma, B. Sarkar, Optimization of extraction of antioxidant from wheat bran (*Triticum spp.*) using response surface methodology, *Journal of Food Science and Technology* 49 (2012) 294-308.

[54] D. Beer, E. Joubert, C. Malherbe, J. Brand, Use of countercurrent chromatography during isolation of 6-hydroxyluteolin-7-*O*- β -glucoside, a major antioxidant of *Athrixia phyllicoides*, *Journal of Chromatography A* 1218 (2011) 6179-6186.

[55] K. Kozics, V. Klusová, A. Srančíková, P. Mučaji, D. Slameňová, L. Hunáková, B. Kusznierevicz, E. Horváthová, Effects of *Salvia officinalis* and *Thymus vulgaris* on oxidant-induced DNA damage and antioxidant status in HepG2 cells, *Food Chemistry* 141 (2013) 2198-2206.

[56] Z.F. Peng, D. Strack, A. Baumert, R. Subramaniam, N.K. Goh, T.F. Chia, S.N. Tan, L.S. Chia, Antioxidant flavonoids from leaves of *Polygonum hydropiper* L., *Phytochemistry* 62 (2003) 219-228.

FIGURE CAPTIONS

Figure 1. Effects of extraction procedures on TP yield: maceration, heat-assisted extraction (HAE), ultrasound-assisted extraction (UAE); different letters on box plot error bars represent different population groups based on Duncan's multiple range test ($p < 0.05$).

Figure 2. Pareto charts of factors influence on the yield of TP in maceration (A), heat-assisted extraction - HAE (B) and ultrasound-assisted extraction - UAE (C); factor codes: 1, particle size; 2, type of solvent; 3, solid-to-solvent ratio; 4, extraction time.

Figure 3. Surface plots of solid-to-solvent ratio and solvent type effects on TFC (mg CE/L) of selected *T. serpyllum* extracts in maceration (A), heat-assisted extraction - HAE (B) and ultrasound-assisted extraction - UAE (C).

ACCEPTED MANUSCRIPT

Table 1. Preliminary screening of each factor level's influence on total polyphenols (TP) in *T. serpyllum* extracts.

Factor	Level	TP [mg GAE/L]					
		Extraction techniques					
		Maceration*		HAE		UAE	
Particle size [mm]	0.3	18.12 ± 4.64	a	22.06 ± 4.85	a	22.81 ± 6.23	a
	0.7	17.15 ± 4.52	b	18.97 ± 4.04	b	21.48 ± 4.46	a
	1.5	14.98 ± 3.18	c	18.33 ± 4.58	b	21.23 ± 6.42	a
Solid-to-solvent ratio	1:10	13.68 ± 2.93	c	15.14 ± 2.28	c	16.87 ± 2.84	c
	1:20	17.72 ± 3.81	b	20.63 ± 3.10	b	23.15 ± 4.36	b
	1:30	18.85 ± 4.39	a	23.59 ± 4.11	a	27.50 ± 4.12	a
Solvent type [% EtOH]	30% EtOH	17.30 ± 3.57	b	19.31 ± 4.00	b	22.50 ± 5.39	b
	50% EtOH	19.56 ± 4.77	a	22.60 ± 5.45	a	24.94 ± 4.81	a
	70% EtOH	15.35 ± 3.96	c	19.21 ± 4.12	b	22.20 ± 4.39	b
	water	14.79 ± 3.34	c	18.20 ± 4.24	c	18.58 ± 4.23	c
Time [min]	5	13.14 ± 2.43	b	18.41 ± 4.21	b	21.59 ± 5.38	a
	15	17.01 ± 4.35	a	20.62 ± 4.63	a	23.09 ± 6.25	a
	30	17.82 ± 4.23	a	20.34 ± 5.16	a	22.84 ± 5.70	a
	60	18.13 ± 4.10	a	-	-	-	-
	90	17.65 ± 4.37	a	-	-	-	-

*Values with the same letter in each column showed no statistically significant difference ($p > 0.05$).

TP, total polyphenols; GAE, gallic acid equivalents; HAE, heat-assisted extraction; UAE, ultrasound-assisted extraction.

Table 2. Experimental design for screening of factor influence on total polyphenols content with the observed and predicted values.

#	Particle size	Solid-to-solvent ratio	Solvent type	Particle size [mm]	Solid-to-solvent ratio	Solvent type [% EtOH]	TP [mg GAE/L]						
							Maceration		HAE		UAE		
							Observed	Predicted	Observed	Predicted	Observed	Predicted	
		Design			Factor levels								
1	-1	-1	-1	0.3	1:20	30	18.76	18.86	23.09	22.81	23.62	24.02	
2	-1	-1	1	0.3	1:20	50	23.04	22.94	26.84	27.12	27.60	27.19	
3	-1	1	-1	0.3	1:30	30	24.10	24.00	25.88	26.16	31.16	30.76	
4	-1	1	1	0.3	1:30	50	26.58	26.68	29.80	29.52	32.68	33.08	
5	1	-1	-1	0.7	1:20	30	18.60	18.50	19.82	20.10	23.55	23.15	
6	1	-1	1	0.7	1:20	50	21.44	21.53	25.82	25.54	24.04	24.44	
7	1	1	-1	0.7	1:30	30	22.61	22.70	20.50	20.22	26.96	27.36	
8	1	1	1	0.7	1:30	50	24.42	24.32	24.44	24.72	28.21	27.80	

TP, total polyphenols; GAE, gallic acid equivalents ; HAE, heat-assisted extraction; UAE, ultrasound-assisted extraction.

Table 3. Statistical analysis of extraction optimization using 2³ factorial design.

	Effect	Std.Err.	Effect Estimates	Coeff.	Std.Err. Coeff.	<i>p</i>
Maceration						
<i>TPC (mg GAE/L)</i>						
Constant				22.442	0.253	0.000
Main factors						
Particle size [mm] (1)	-1.354	0.507	-2.672	-0.677	0.253	0.016
Solid-to-solvent ratio (2)	3.967	0.507	7.826	1.984	0.253	0.000
Solvent type [% EtOH] (3)	2.850	0.507	5.622	1.425	0.253	0.000
Interaction of two factors						
1 by 2	-0.475	0.507	-0.937	-0.238	0.253	0.362
1 by 3	-0.528	0.507	-1.042	-0.264	0.253	0.312
2 by 3	-0.707	0.507	-1.395	-0.354	0.253	0.181
HAE						
<i>TPC (mg GAE/L)</i>						
Constant				24.525	0.215	0.000
Main factors						
Particle size [mm] (1)	-3.755	0.429	-8.744	-1.877	0.215	0.000
Solid-to-solvent ratio (2)	1.261	0.429	2.938	0.631	0.215	0.009
Solvent type [% EtOH] (3)	4.400	0.429	10.247	2.200	0.215	0.000
Interaction of two factors						
1 by 2	-1.613	0.429	-3.757	-0.807	0.215	0.002
1 by 3	0.567	0.429	1.321	0.284	0.215	0.204
2 by 3	-0.470	0.429	-1.094	-0.235	0.215	0.289
UAE						
<i>TPC (mg GAE/L)</i>						
Constant				27.226	0.260	0.000
Main factors						
Particle size [mm] (1)	-3.077	0.521	-5.910	-1.539	0.260	0.000
Solid-to-solvent ratio (2)	5.050	0.521	9.699	2.525	0.260	0.000
Solvent type [% EtOH] (3)	1.805	0.521	3.467	0.903	0.260	0.003
Interaction of two factors						
1 by 2	-1.263	0.521	-2.425	-0.631	0.260	0.027
1 by 3	-0.941	0.521	-1.806	-0.470	0.260	0.089
2 by 3	-0.424	0.521	-0.815	-0.212	0.260	0.426

TPC, total polyphenols content; GAE, gallic acid equivalents; HAE, heat-assisted extraction; UAE, ultrasound-assisted extraction.

Table 4. Identified polyphenolic compounds in chosen *T. serpyllum* extract (LC/MS).

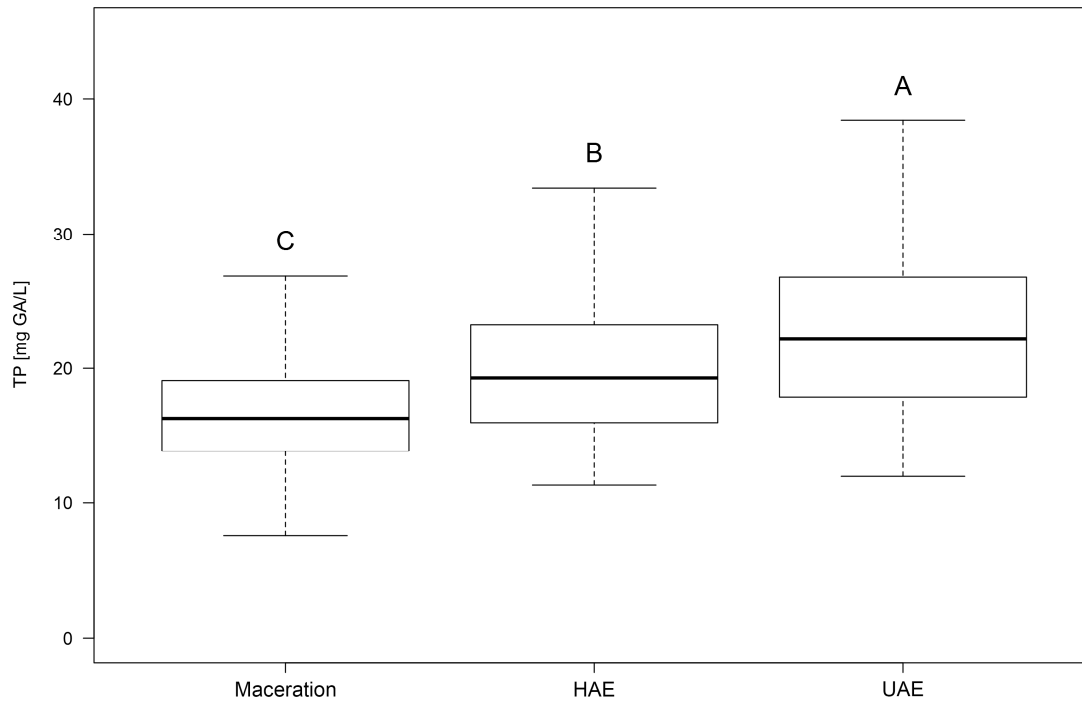
Peak	Retention time [min]	Compound	Compound class	DAD	Species	MS	Molecular formula
				λ_{\max} [nm]		Mass	
1	6.93	6,8-Di-C-glucosylapigenin	FL	236, 278, 326	M-H, 2M-H	594.1573	C ₂₇ H ₃₀ O ₁₅
2	6.96	Chlorogenic acid	CA	302sh, 324	M-H, M+HCOO, 2M-H	354.0949	C ₁₆ H ₁₈ O ₉
3	8.27	6-hydroxyluteolin 7-O-glucoside	FL	284, 342	M-H, 2M-H	464.0947	C ₂₁ H ₂₀ O ₁₂
4	8.33	Caffeic acid	CA	300sh, 328	M-H, 2M-H	180.0421	C ₉ H ₈ O ₄
5	9.57	Luteolin 7-O-glucuronide	FL	256, 268sh, 342	M-H, M+HCOO, M+Cl, 2M-H	462.0788	C ₂₁ H ₁₈ O ₁₂
6	11.12	Apigenin glucuronide	FL	268, 334	M-H, 2M-H	446.0844	C ₂₁ H ₁₈ O ₁₁
7	11.44	Salvianolic acid K isomer	CA	286, 332	M-H, M+HCOO, 2M-H	556.1205	C ₂₇ H ₂₄ O ₁₃
8	11.75	Rosmarinic acid	CA	294, 330	M-H, M+HCOO, M+Cl, 2M-H	360.0846	C ₁₈ H ₁₆ O ₈
9	12.44	Salvianolic acid I	CA	294, 326	M-H	538.1099	C ₂₇ H ₂₂ O ₁₂

FL, flavonoids; CA, caffeic acid derivatives.

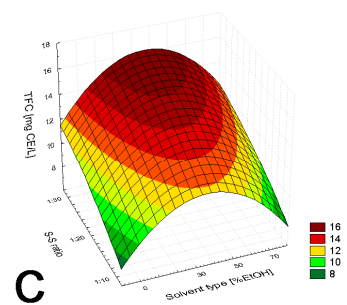
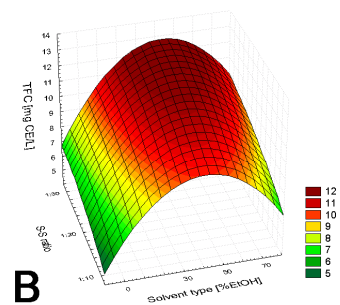
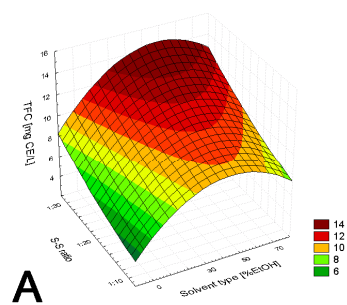
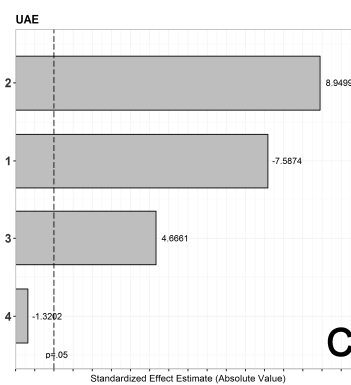
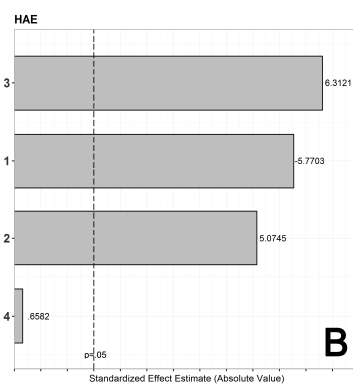
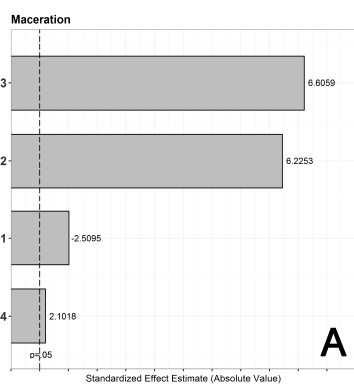
Table 5. Content of phenolic acids and flavonoids in selected *T. serpyllum* extracts determined by HPLC.

	S-S ratio*	solvent type [% EtOH]	6,8-Di-C-glucosyl apigenin (µg/mL)	ChA (µg/mL)	6-hydroxy luteolin 7-O-glucoside (µg/mL)	Caffeic acid (µg/mL)	Luteolin 7-O-glucuronide (µg/mL)	Apigenin glucuronide (µg/mL)	SA K isomer (µg/mL)	RA (µg/mL)	SA I (µg/mL)
M	1:20	30	0.09	tr	0.39	0.07	1.56	0.35	0.73	3.22	/
	1:20	50	0.11	tr	0.71	0.04	1.63	0.39	0.82	3.68	0.61
	1:30	30	0.13	tr	0.51	0.12	1.55	0.37	0.83	3.50	0.07
	1:30	50	0.12	tr	0.53	0.14	1.48	0.34	0.77	3.73	0.97
HAE	1:20	30	0.08	tr	0.35	0.12	1.36	0.30	0.68	3.41	0.43
	1:20	50	0.06	tr	0.28	0.18	1.48	0.39	0.80	3.62	0.51
	1:30	30	0.11	tr	0.41	0.12	1.50	0.29	0.89	3.59	0.47
	1:30	50	0.16	tr	0.66	0.13	1.89	0.38	0.93	4.06	0.94
UAE	1:20	30	0.06	tr	0.21	0.16	0.88	0.13	0.49	1.69	/
	1:20	50	0.12	tr	0.48	0.20	1.63	0.42	0.95	4.12	0.72
	1:30	30	0.09	tr	0.26	0.07	1.23	0.31	0.78	3.37	0.34
	1:30	50	0.17	tr	0.78	0.16	2.04	0.29	0.97	4.18	1.21

* S-S, solid-to-solvent; M, maceration; HAE, heat-assisted extraction; UAE, ultrasound-assisted extraction; ChA, chlorogenic acid; SA, salvianolic acid; tr, traces.



ACCEPTED



Highlights

- The influence of five extraction factors on the polyphenols yield was evaluated.
- The efficiency of the extraction techniques was UAE > HAE > maceration.
- The optimal extraction conditions were determined by full factorial design.
- The best extraction conditions: 0.3 mm particle size, 1:30 ratio and 50% ethanol.

ACCEPTED MANUSCRIPT